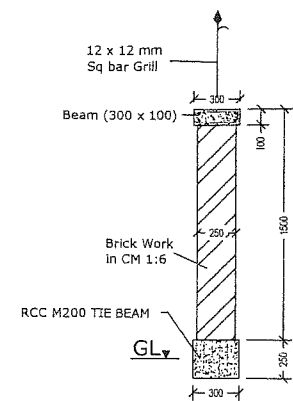
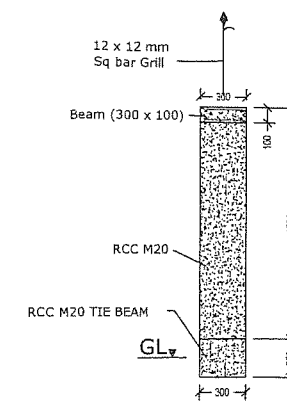


TYPICAL ELEVATION



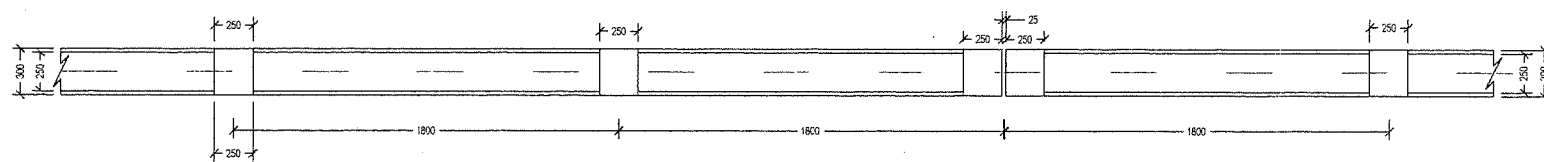
SECTION AT X-X



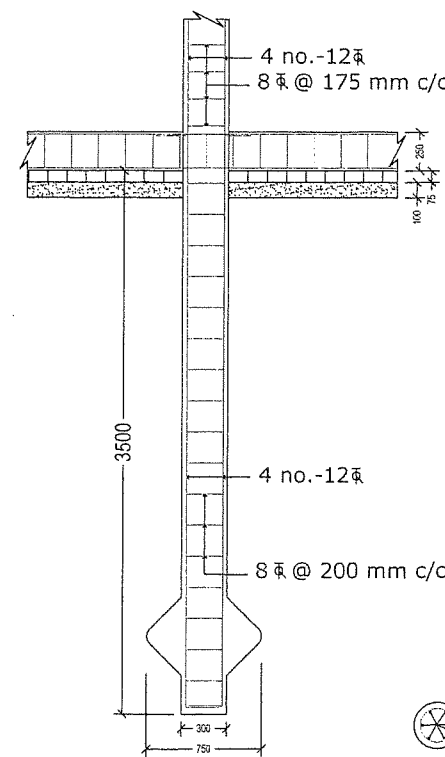
SECTION AT Y-Y

4 no.-8 $\bar{\Phi}$
6 $\bar{\Phi}$ Strp @ 200 mm c/c

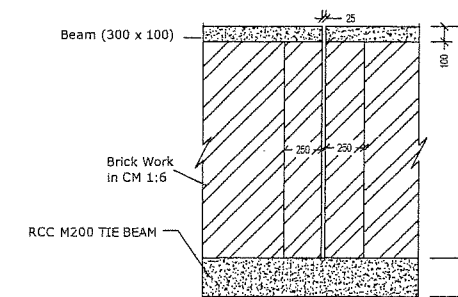
SECTION OF BEAM
(300 x 100)



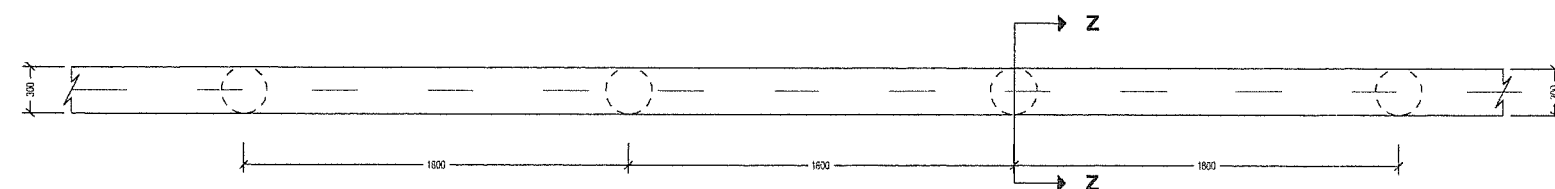
TYPICAL PLAN



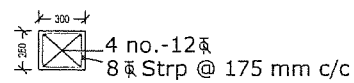
DETAILS OF PILE /
SECTION AT Z-Z



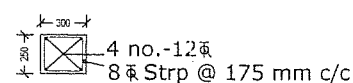
TYPICAL ELEVATION
Near Expansion Joint



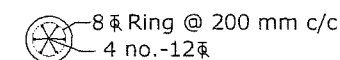
LAYOUT PLAN OF PILE & TIE BEAM



TYPICAL SECTION
OF TIE BEAM



TYPICAL SECTION
OF STIFFENERS



SECTIONAL
PLAN OF PILE

14-5-2018
Chief Consultant (Technical)
Bihar State Educational Infrastructure
Development Corporation Ltd., Patna

Note :

- All dimensions are in mm (otherwise specified).
- Development Length (Ld) = 50 x dia of bar
- Clear cover : For Pile - 40 mm, For Tie beam - 25 mm, For Stiffener - 25 mm.
- Expansion Gap shall be provided at regular interval of 30 m.

Date :
05-05-2018

Bihar State Educational Infrastructure
Development Corporation Ltd, Patna

Project : CONSTRUCTION OF BOUNDARY WALL FOR
DIET / PTEC CAMPUS AT

Sheet : DETAILS OF BOUNDARY WALL