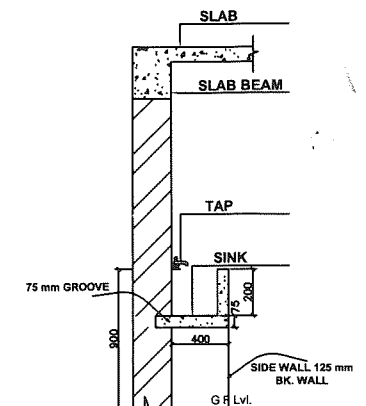


SEismic ZONE IV

SCHEDULE OF DOORS & WINDOWS					
SL.NO.	TYPE	WIDTH	HEIGHT	NOS.	DESCRIPTION
1	D1	1200	2400	9	DOUBLE PANEL WOODEN DOOR
2	D2	1075	2100	2	DOUBLE PANEL WOODEN DOOR
3	D3	750	2100	6	SINGLE PANEL WOODEN DOOR
4	W	1800	1200	18	STEEL FRAME GLAZED WINDOW
5	W1	1500	1200	2	STEEL FRAME GLAZED WINDOW
6	W2	1200	1200	2	STEEL FRAME GLAZED WINDOW
7	W3	900	600	7	STEEL FRAME GLAZED WINDOW
8	V	600	600	6	STEEL GLAZED VANTILATION
9	V1	600	900	22	STEEL GLAZED VANTILATION
10	FGL	1500	2100	1	GLAZED VANTILATION
11	FGL1	1500	1450	1	GLAZED VANTILATION



SECTION A - A

*Drinking water point added
Pankaj Sahu
12.7.18*

BIHAR STATE EDUCATIONAL INFRASTRUCTURE DEVELOPMENT CORPORATION LTD.
SHIKSHA BHAWAN, SAIDPUR, PATNA

<i>A. V. Gupta</i> 12.7.18	1	<i>Pankaj Sahu</i> 12.7.18
DRAUGHTSMAN BSEIDC, PATNA	ARCH. BSEIDC, PATNA	SENIOR (ARCH.) BSEIDC, PATNA

PROJECT: PROPOSED CONSTRUCTION OF DIET INSTITUTIONAL BUILDING AT NOORSARAI, SONPUR, SHIVHAR, KISHANGANJ

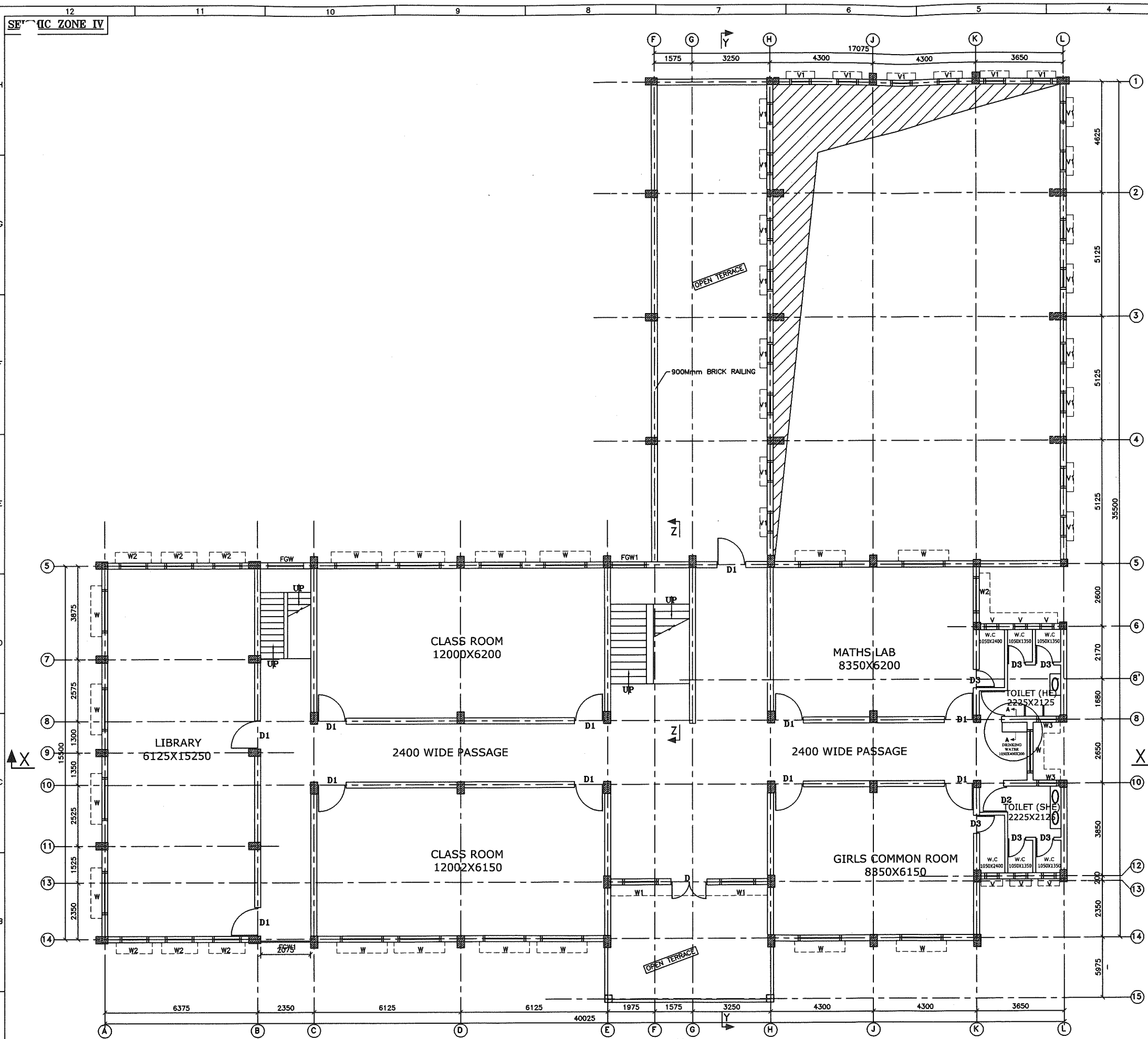
DEPT.: BIHAR STATE EDUCATIONAL INFRASTRUCTURE DEVELOPMENT CORPORATION LTD. SHIKSHA BHAWAN, SAIDPUR, PATNA

ARCHT. AND CONSULTANT: RDCS RANCHI DESIGN & CONSULTANCY SERVICES PVT. LTD. SOUTH OFFICE PARA, NEAR ST. XAMIER SCHOOL DORANDA, RANCHI-834002

CHECKED & APPROVED: S.L. GOPE
DESIGN BY: S.A.
DRAWN BY: JANAN

SCALE: 1:75

ORG. NO.-RDCS/BSEIDC/0088/EDUB/001 SHEET 2 OF 6 REV R=0



FIRST FLOOR PLAN
AREA-582.46 sqm. (6267.30 sqft.)
(SCALE 1:75)

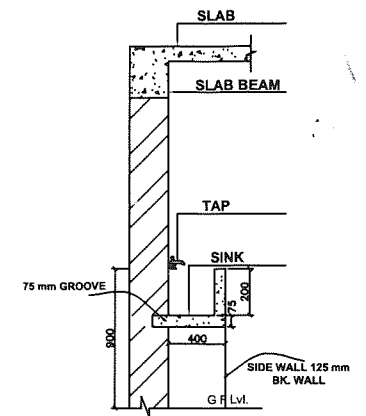
REV.	DESCRIPTION	DATE	BY

NOTES:-
1. ALL DIMENSIONS AND LEVELS ARE IN mm. & FIGURED DIMENSIONS SHALL BE FOLLOWED.
2. ±0.00 LEVEL CORRESPONDS TO PLINTH LEVEL (P.L.) OF BUILDING, WHICH IS 1050mm ABOVE GROUND LEVEL (G.L.).

3. ALL RCC WORK SHALL BE OF M25 GRADE CONCRETE.
4. BRICKWORK SHALL BE WITH GRADE M5 BRICKS IN CEMENT MORTAR 1:6.

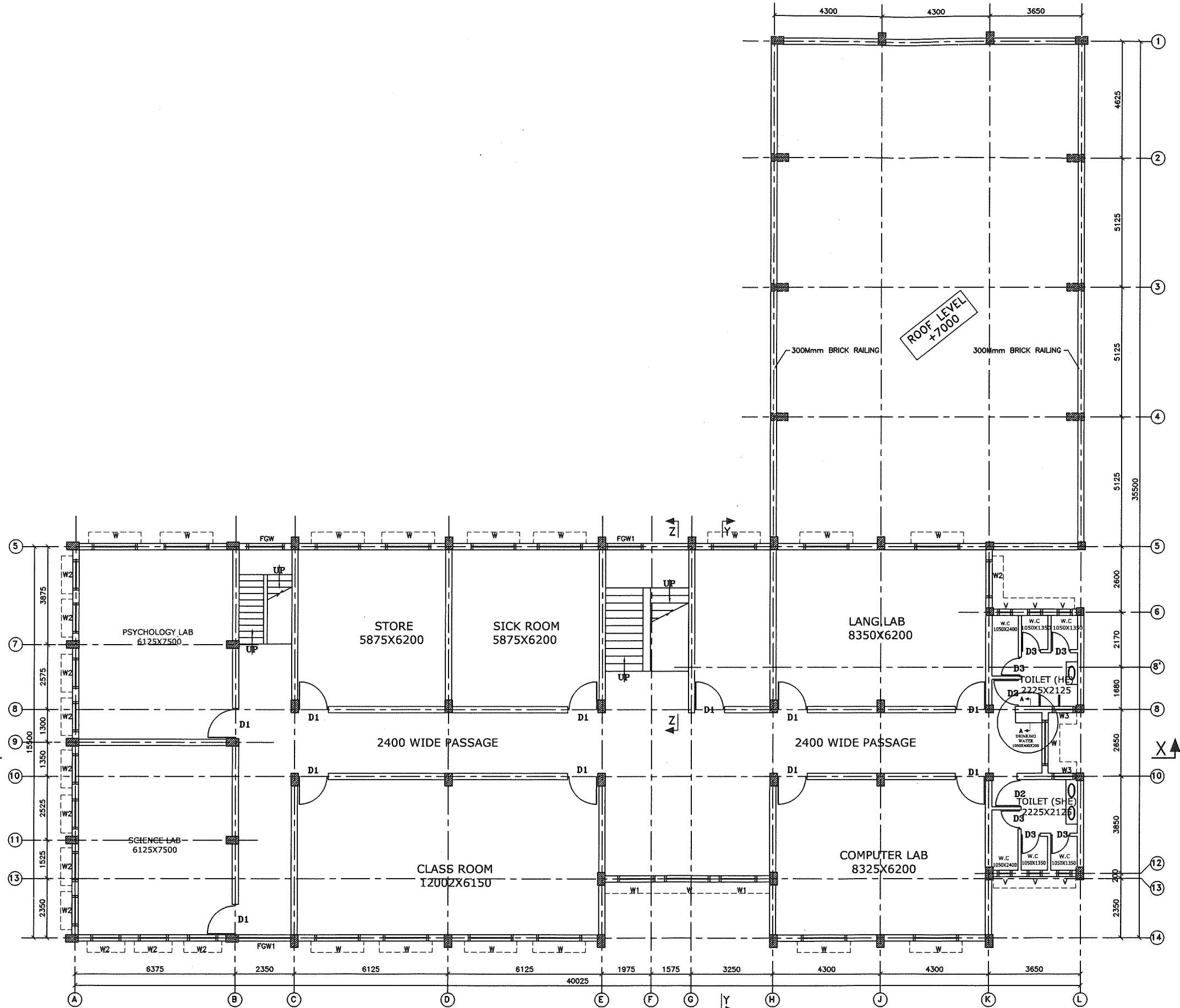
SF ZONE IV

SCHEDULE OF DOORS & WINDOWS						
SL.NO.	TYPE	WIDTH	HEIGHT	NOS.	DESCRIPTION	
1	D1	1200	2400	8	DOUBLE PANEL WOODEN DOOR	
2	D2	1075	2100	2	DOUBLE PANEL WOODEN DOOR	
3	D3	750	2100	6	SINGLE PANEL WOODEN DOOR	
4	W	1800	1200	16	STEEL FRAME GLAZED WINDOW	
5	W1	1500	1200	2	STEEL FRAME GLAZED WINDOW	
6	W2	1200	1200	12	STEEL FRAME GLAZED WINDOW	
7	W3	900	600	2	STEEL FRAME GLAZED WINDOW	
8	V	600	600	6	STEEL GLAZED VANTILATION	
9	FGL	1500	2100	1	GLAZED VANTILATION	
10	FGL1	1500	1450	1	GLAZED VANTILATION	



SECTION A - A

*Drinking water post added
Pankaj Singh
12.7.18*



SECOND FLOOR PLAN
AREA-582.46 sqm. (6267.30 sqft.)
(SCALE 1:75)

NOTES:-

- ALL DIMENSIONS AND LEVELS ARE IN mm. & FIGURED DIMENSIONS SHALL BE FOLLOWED.
- ±0.00 LEVEL CORRESPONDS TO PLINTH LEVEL(P.L) OF BUILDING. WHICH IS 1050mm ABOVE GROUND LEVEL(G.L).
- ALL RCC WORK SHALL BE OF M25 GRADE CONCRETE.
- BRICKWORK SHALL BE WITH GRADE M5 BRICKS IN CEMENT MORTAR 1:6.

BIHAR STATE EDUCATIONAL INFRASTRUCTURE DEVELOPMENT CORPORATION LTD.
SHIKSHA BHAWAN, SAIDPUR, PATNA

<i>A. Haque</i> 12.7.18	ARCH. BSEIDC, PATNA	<i>Pankaj Singh</i> 17.7.18
DRAUGHTSMAN BSEIDC, PATNA		SENIOR (ARCH.) BSEIDC, PATNA

PROJECT PROPOSED CONSTRUCTION OF DIET INSTITUTIONAL BUILDING AT NOORSARAI, SONPUR, SHIVHAR, KISHANGANJ

DEPT. BIHAR STATE EDUCATIONAL INFRASTRUCTURE DEVELOPMENT CORPORATION LTD. SHIKSHA BHAWAN, SAIDPUR, PATNA

ARCHT. AND CONSULTANT RANCHI DESIGN & CONSULTANCY SERVICES PVT. LTD. SOUTH OFFICE PARA, NEAR ST. XAVIER SCHOOL DORANDA, RANCHI-834002

CHECKED & APPROVED	S.L. GOPE	SECOND FLOOR PLAN +7000 LVL.
DESIGN BY	S.A.	
DRAWN BY	JONSAN	

SIZE-A1	SCALE 1:75	DRG. NO.-RDCS/BSEIDC/0088/EDUB/001	SHEET 3 OF 6	REV R=0
---------	------------	------------------------------------	--------------	---------

REV.	DESCRIPTION	DATE	BY